

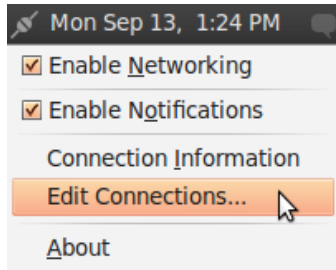


PPTP on Ubuntu

This document contains instructions for configuring and connecting via PPTP for GTA Firewalls.

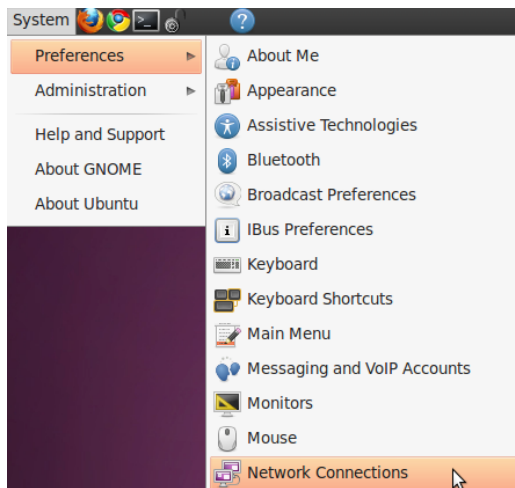
Configuring

1. Open the Network Connections window.
 - a. Right click on the Network Icon (on the right hand side of the upper toolbar) and select Edit Connections....

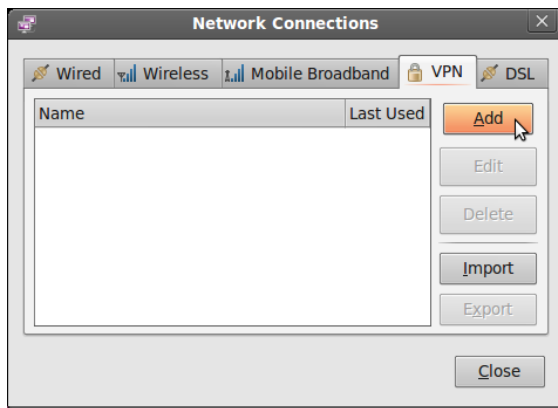


-OR-

- b. Open the System menu to System > Preferences > Network Connections.

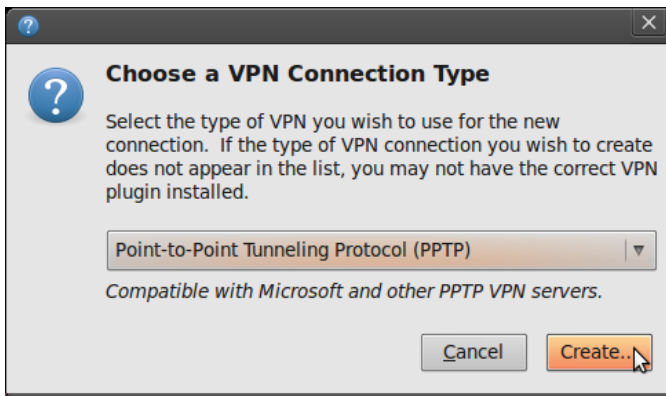


2. Go to the VPN tab and Click Add.





3. Select Point-to-Point Tunneling Protocol (PPTP) and click Create....

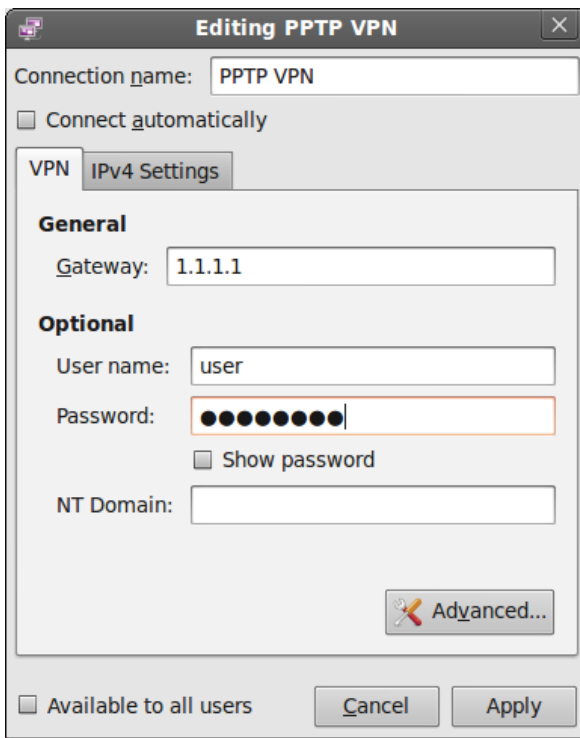


4. Fill in the information for:

Gateway - the IP Address or resolvable Hostname of the Firewall that you are connecting.

Username - the Identity of your User on the firewall.

Password - the L2TP/PPTP Password for your User on the firewall.



5. Click Apply.



Connecting

1. Left click on the Network Icon and select VPN.

