

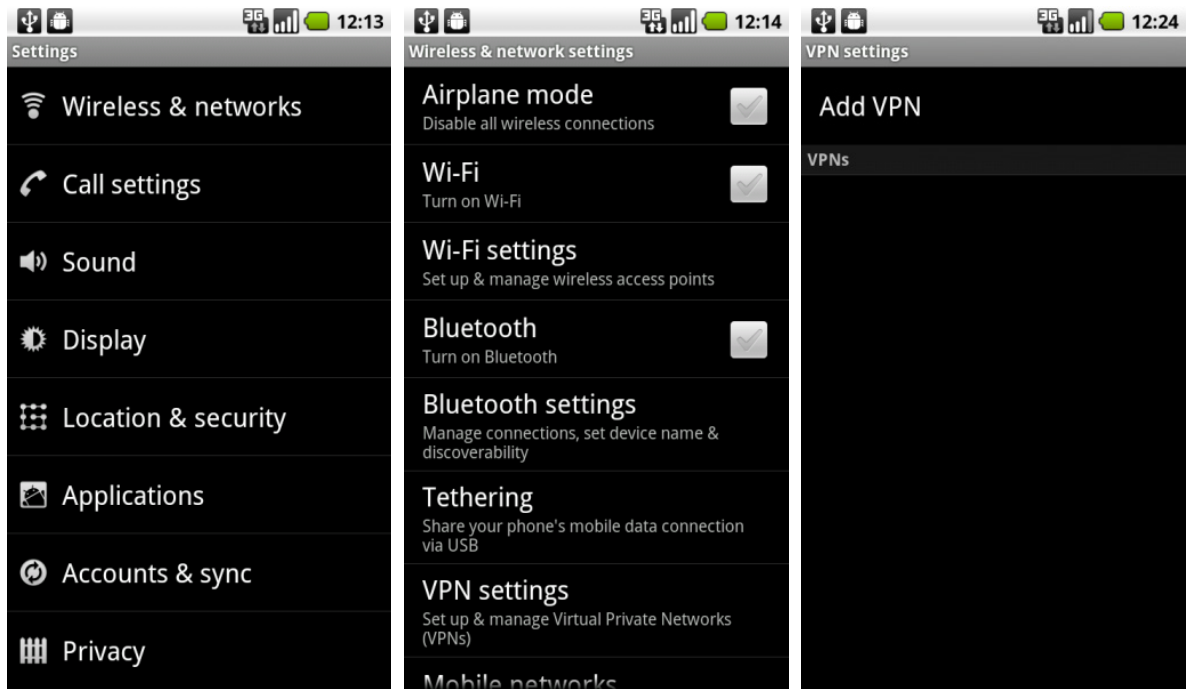


# PPTP on Android Devices

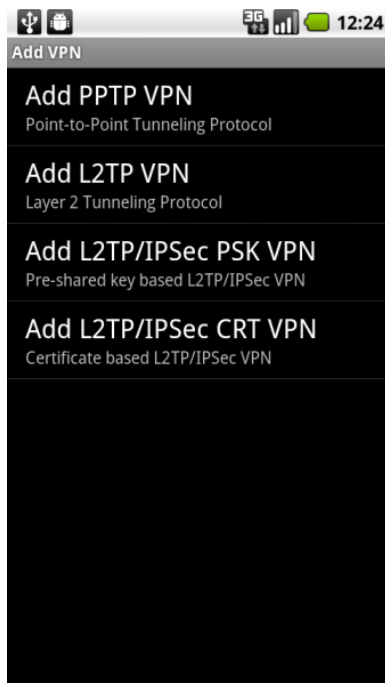
This document contains instructions for configuring and connecting via PPTP for GTA Firewalls.

## Configuring

1. Go to VPN Settings by pressing the **MENU** key and select **SETTINGS** then navigate to **Wireless & Networks > VPN Settings**

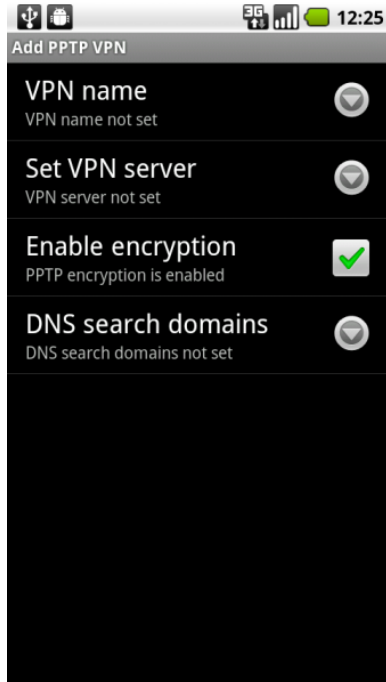


2. Select **ADD VPN**

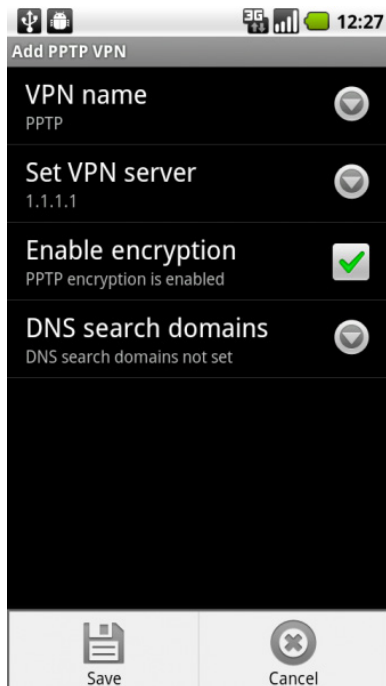




### 3. Select **ADD PPTP VPN**



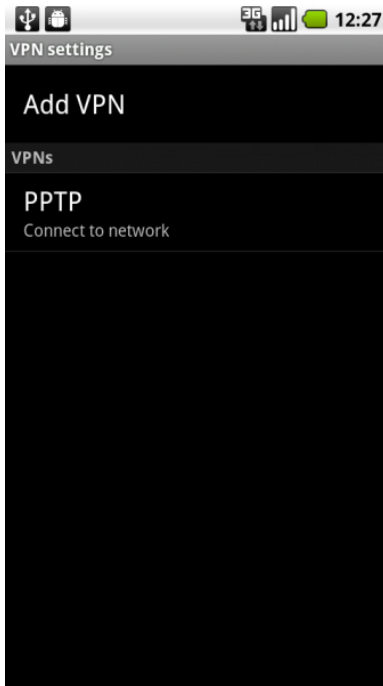
4. Select the arrow to the right of **VPN NAME** and enter the name for the VPN tunnel.
5. Select the arrow to the right of **SET VPN SERVER** and enter the IP address or resolvable Domain Name of the firewall that you will be connecting.
6. Press the **MENU** key and select **SAVE**.





# Connecting

1. Go to VPN SETTINGS.



2. Select the VPN configured in the previous section.

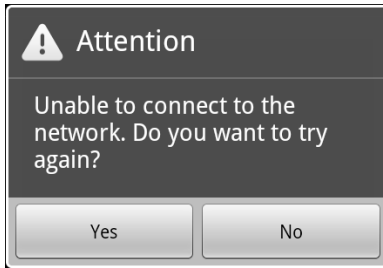


3. Enter the User Name for the user created on the firewall.
4. Enter the L2TP/PPTP password for your user.
5. Select **CONNECT**.



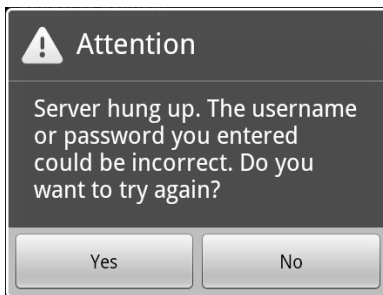
# Troubleshooting

If you get a popup **Unable to connect to the network**, check the following:



1. Verify Network Connectivity - can the device ping the firewall (or if stealth mode is enabled the firewalls gateway)
2. Firewall Log messages

If you get a popup **Server hung up. The username or password you entered could be incorrect**, check the following:



1. Verify the username and password entered match the Username and L2TP/PPTP password
2. Verify the Firewall User has L2TP/PPTP enabled
3. Verify the Firewall Users group has L2TP/PPTP enabled
4. Review the Firewall Log Messages for any errors (consider enabling Debug Logs for PPTP Server)

